

# Universal Drive Adapter

## User Guide

### Package Contents:

- A. Universal Drive Adapter with captive USB 3.1 Gen 1 cable
- B. Power supply and cable
- C. Power converter
- D. SATA power cable (converter to drive)
- E. 4-pin power cable (converter to drive)
- F. SATA data cable

**Note:** items not shown to scale.



### Compatible Drives

- 2.5 inch and 3.5 inch IDE/ATA hard drives, and 5.25 inch ATAPI optical drives.
- 2.5 inch and 3.5 inch SATA hard drives, and 5.25 inch SATA optical drives. **NOTE:** Only compatible with full-height 5.25 inch optical drives. Not compatible with slimline (i.e. laptop) optical drives.

### Connections

#### USB 3.1 Gen 1:

Connect the Universal Drive Adapter to your computer using the captive cable. (Backward compatible with USB 2.0 and USB 1.1)

#### 40-pin ATA:

Use this connector on the Universal Drive Adapter to attach 3.5 inch IDE/ATA hard drives and 5.25 inch ATAPI optical drives.

#### 44-pin ATA:

Use this connector on the Universal Drive Adapter to attach 2.5 inch IDE/ATA hard drives.

#### SATA:

Use these cables to attach all drives that use a SATA connection.

#### LED

On the front of the Universal Drive Adapter there are two multifunction LED indicators, showing both power and drive activity. Each LED will display solid blue when the Universal Drive Adapter is plugged into your USB port and drawing power. Each LED will flash when data is being transferred through the Universal Drive Adapter.



The NewerTech Universal Drive Adapter is designed to be used on a temporary basis. This adapter does not have an enclosure to protect the drive from damage due to electrostatic discharge. We recommend placing the drive on a static-free work surface when using it with the Universal Drive Adapter. Another option is to use a

NewerTech ProtectaDrive, pictured below. By encapsulating your drive with this protective sleeve you can help protect it from impact, short circuits, and static electricity. **NOTE:** the cable shown is not part of the Universal Drive Adapter kit and is not included with the ProtectaDrive; it is shown for illustrative purposes.

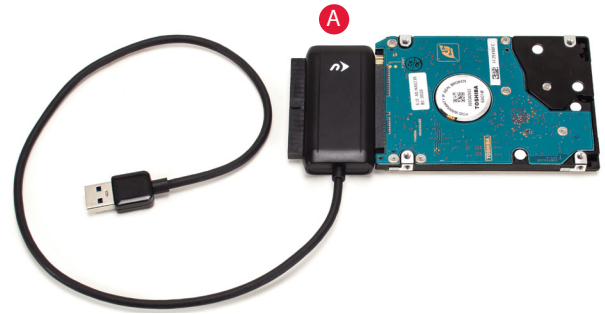


## 3.5" and 5.25" IDE/ATA/ATAPI Drives

1. Set the drive to 'Master' or 'Single Drive' mode by placing one or more jumper blocks on different pins at the rear of the drive. Jumper settings vary by manufacturer and often are displayed on the drive label or on the manufacturer's web site.
2. Use the 4-pin power cable (item E) to connect the drive and the power converter (item C), then connect the converter to the power supply (item B).
3. Connect the drive to the 40-pin ATA connector on the Universal Drive Adapter (item A). This connector is keyed to prevent devices from being plugged in upside-down. If you have trouble connecting your drive, make sure it is oriented correctly.
4. Plug the power cord into the power supply (item B), and then connect the power supply to an AC outlet.
5. Connect the captive USB 3.1 Gen 1 cable on the Universal Drive Adapter (item A) to any USB Standard-A port on your computer. Allow up to 30 seconds for your drive to mount as an external USB device.



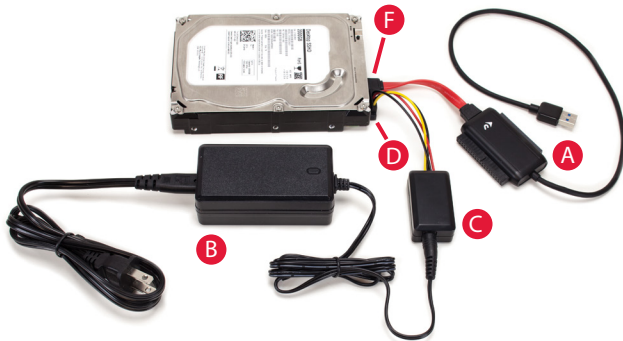
## 2.5" IDE/ATA Drives



1. Connect your drive to the 44-pin ATA connector on the Universal Drive Adapter (item A). Note that the connector is keyed; if you have trouble connecting your drive, check to make sure it is oriented correctly.
2. Connect the captive USB 3.1 Gen 1 cable on the Universal Drive Adapter to any USB Standard-A port on your computer. Allow up to 30 seconds for your drive to mount as an external USB device.

**NOTE:** 2.5 inch IDE/ATA drives connected to the Universal Drive Adapter receive power through the USB cable. If your drive is not receiving enough power, try connecting the Universal Drive Adapter to a different USB port on your computer.

## SATA Drives



1. Use the SATA power cable (item D) to connect the drive to the power converter (item C), then connect the converter to the power supply (item B).
2. Use the SATA data cable (item F) to connect the drive to the Universal Drive Adapter (item A). The plugs on the cable are keyed so that they can be connected using only one orientation. If either plug does not fit on first attempt, make sure the key matches the connector on the device(s).
3. Connect the captive USB 3.1 Gen 1 cable on the Universal Drive Adapter (item A) to any USB Standard-A port on your computer using the captive cable. Allow up to 30 seconds for your drive to mount as an external USB device.

## Troubleshooting

Begin troubleshooting by verifying that the drive is receiving power. For the configurations that use the power supply, make sure it is connected to a power source. If the power supply is connected to a power strip, make sure that the power switch on the strip is powered on. Next verify that both ends of all necessary cables are properly connected as shown in this guide.

If the Universal Drive Adapter is still not working properly, try connecting to a different USB port on your computer. You can also connect to a different computer. If problems persist, contact technical support:

8am - 8pm (CT) Monday - Friday

9am - 4pm (CT) Saturday

(800) 275-4576 (North America only)

+1 (815) 308-7001 (International)

Live chat is available during normal business hours.

[www.newertech.com/support](http://www.newertech.com/support)

Email our support team at:

[www.newertech.com/support](http://www.newertech.com/support)